



LAGUNA BEACH
COMMUNITY
FOUNDATION

ANNUAL REPORT
2015

Laguna Beach Community Foundation
303 Broadway, Suite 212, Laguna Beach, CA 92651
Tel: 949.715.8223
info@lagunabeachcf.org • www.lagunabeachcf.org

Our Mission

The Laguna Beach Community Foundation strengthens our community by encouraging philanthropy. We provide expertise and resources to assist local charities, connect donor passions with nonprofit needs, and work with local professional advisors to assist their clients in giving now and beyond their lifetimes with a legacy gift.

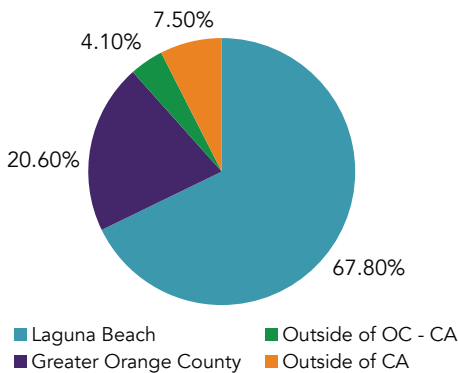
Who Are Our Partners?

Our partners are fund holders, grantees, donors, referring professionals and volunteers. Working together we are creating a stronger Foundation and making our part of the world a better place.

By The Numbers

Our world-class Investment Committee employs a moderate growth strategy to grow assets as much as market conditions allow and produces excellent results in both up and down markets over extended periods of time.

2015 Grant Distribution by Grantee Location

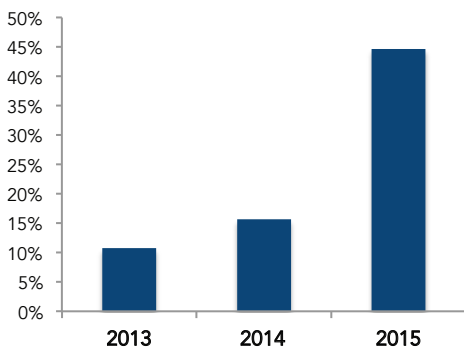


Historic Period Investment Returns*

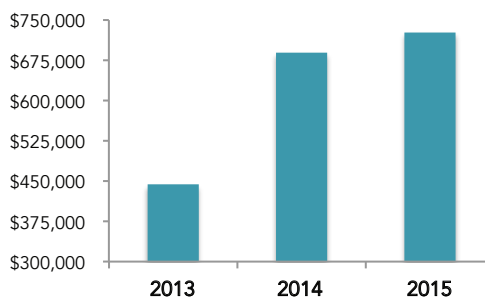
	Returns	Standard Deviation
1-Year	-1.2%	7.8%
3-Year	6.4%	7.0%
5-Year	6.5%	8.2%
10-Year	6.0%	10.7%
20-Year	7.2%	10.1%
30-Year	9.3%	9.9%

*Through 12/31/2015

% Asset Growth Year over Year



Grant Disbursement



Strength in Community



Dennis Boyer, LBCF Trustee; Daniel Pingaro, LBCF Executive Director; Valarie Van Cleave, Oceana Vice Chair; Geoff Shester, Ph.D., Oceana California Campaign Director and LBCF Speaker Series Feature

LBCF Speakers Series

Building meaningful community partnerships through a monthly series focused on education and collaboration.



Tyler Russell, KX93.5 Program Director and Founder and LBCF Speaker Series Feature

"Laguna Beach has been home to my family, to my career and to many of my patients for years. My wife Carolyn and I are passionate about giving back and opening a Donor Advised Fund at Laguna Beach Community Foundation helped us enhance our philanthropy at home,"

- Dr. Tom Bent, Donor Advised Fund Holder and Family Doctor and COO at Laguna Beach Community Clinic.

A Message From The Board Chair

Greetings!

2015 was a year of many milestones and new partnerships. Beginning the year with the opening of the Boys & Girls Club of Laguna Beach Funds, the largest fund opening in LBCF history, was an unforgettable highlight.

As the number of fund holders increased, we hit a new milestone that speaks directly to our mission. Since 2010, over \$4 million in grants have been awarded. In addition, our fund holders now have 24/7 access to the LBCF online portal that allows them to review their fund balance and grant directly to nonprofit organizations that mean the most to them.

Our focus in 2015 was to engage the community in a conversation about philanthropy. We debuted our monthly e-newsletter that keeps community partners informed. We featured monthly a Speaker Series that serves as a platform for building meaningful community partnerships.

To reinforce our dedication to serving as the central philanthropic resource to the community, we rebranded LBCF with a new logo, website, advertising campaign, and educational collateral for donors and their advisors. It was truly a labor of love, and we are endlessly grateful to everyone who contributed to make this possible.

We look forward to a new year with a sense of accomplishment and excitement. All of our advancements would not have been possible without the generous donations of time, energy and funding of our supporters including our Ambassadors, Founders Friends, Founders Circle, Trustees, Professional Council, Fund Holders and staff.

Sincerely,

Tom Davis, *Board Chairman*



LBCF Board Members

Nicole Anderson
Rick Balzer
Jerry Bieser
Dennis Boyer
Donnie Crevier
Tom Davis, *Board Chair*
Mandi Dossin
James Fletcher, CFA
Robert Harryman, CPA, *Treasurer*
Lyneé Kniss, Esq., *Secretary*
Meghan MacGillivray Weil
John Mansour
Lisa Mansour
Angie Miller
Laura Tarbox, CFP, *Founding Chair*

LBCF Staff

Daniel Pingaro
Executive Director
Rachel Lindsay
*Associate Director of
Initiatives & Communications*

Our New Look

We selected Laguna Beach Community Foundation because we knew they could provide world-class fund management coupled with excellent personal service to us. Partnerships like this strengthen the fabric of our community.

- Pam Estes, Executive Director, Boys & Girls Club of Laguna Beach

LAGUNA BEACH
COMMUNITY
FOUNDATION

FACILITATING LOCAL GIVING

www.lagunabeachcf.org • 949-715-8223

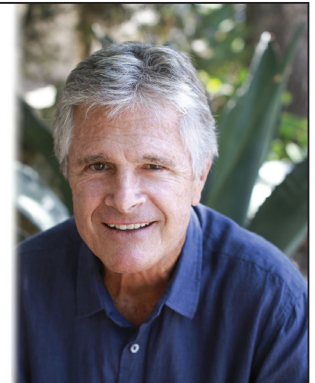


If any of us has had a little luck along the way, I think it is very important that we try and help those less fortunate than ourselves.
- Donnie Crevier, Board Member

Contact LBCF and learn how we can help you support your favorite cause by opening a fund with us.

LAGUNA BEACH
COMMUNITY
FOUNDATION
GIVE WHERE YOU LIVE

www.lagunabeachcf.org • 949-715-8223



*Honored as 2015 Philanthropist of the Year -
Congratulations!*

Our Fund Holders

Anonymous Charitable Fund
Anonymous Family Charitable Fund
Anonymous Support Fund
Balzer Charitable Fund
Boys and Girls Club of Laguna Beach Endowment Fund
Boys and Girls Club of Laguna Beach Reserve Fund
Boys and Girls Club Gross Family Fund for Social and Emotional Education
Carolyn and Tom Bent Charitable Fund
CCA - Tricia and Michael Berns Charitable Fund
Charles and Ann Quilter Legacy Fund
Claes Andersen Hospitality Scholarship Fund
Cogdill Ventura Charitable Fund
Crevier Family Foundation Fund
Crystal Cove Education and Environment Charitable Fund
Davis Family Charitable Fund
Dittberner-Peters Family Charitable Fund
Ellen and Greg Hurley Charitable Fund
Gary and Betsy Jenkins Family Foundation
Glennwood House Endowment Fund
Glennwood House Fund
Halper Family Fund
Jason Paransky Donor Advised Fund
Kathleen Blackburn's Laguna Fund
Kay Family Fund

Laguna Beach Community Enrichment Fund
Laguna Beach Community Foundation Arts Fund
Laguna Beach Community Foundation Disaster Fund
Laguna Beach Community Foundation Environmental Fund
Laguna Beach General Grants Fund
Laguna Beach NextGen Charitable Fund
Laguna Beach Operating Fund
Laguna Beach Police Officer Memorial Artwork Fund
Malas Family Charitable Fund
Mansour Family Fund
Mark E. Towfiq and Carol K. Nakahara Charitable Fund
Mary and Joe Ferguson Fund
Massen Greene Foundation
Miller Family Charitable Fund
One World One Ocean Foundation
Patchwork Fund
Peter and Nicole Anderson Charitable Fund
Stephen and Roberta Prepas Family Fund
Tarbox Laguna Beach Charitable Fund
Tonkon Family Fund
Vella Reddy Charitable Fund
Walker Family Donor Advised Fund
Ward C. Blackburn Charitable Fund
W.L. Lyons Brown III Fund

Founders Circle (\$100,000)

Rick Balzer
Donnie Crevier
Steve Samuelian
Laura Tarbox

2015 Ambassadors (\$1,000)

Georgia Andersen
Kathleen Blackburn
Vern Buwalda
Elizabeth and John Carpino
Melissa and Jeff Cavanaugh
Jane and Paul Egly
Vicki and Robert Gamez
John Hovanesian
Betsy and Gary Jenkins

Kathy Jones
Peter Kote and Barbara Willey
Darryl Loveland
Barbara and Greg MacGillivray
Ann and Charles Quilter
Susan Reese
Mark Simon
Stephany and Morris Skenderian
Ivan Spiers
Marolyn and Myron Wacholder

Founders Friends (\$5,000 – 5 years)

Rick Balzer
Dennis Boyer
Donnie Crevier
Thomas Davis
Lynn Lowry
Jim McQueen
Michael Pinto
Terry Smith
Laura Tarbox



24/7 Access to Your Fund

Send grants online in minutes and let LBCF perform the necessary due diligence and consolidate required income tax documents.

Don't let this be the end of our relationship until next year's annual report.

Visit our new website. At www.lagunabeachcf.org you can make a gift; learn about creating a fund or including us in your estate plan; gather information about our charitable investment strategy; sign up for our monthly speaker series; or stay up to date on community activities through our latest blog post.

Call us at 949-715-8223. Email us at info@lagunabeachcf.org

EIN: 20-6390272